

# Silver Point at Lakeside Unit No. 1 (Simplified)

Showing a 29.847 Acre Tract of land  
 in Section 27, T16N, R13W  
 Caddo Parish, Louisiana  
 November 1, 2017 Scale: 1" = 100'



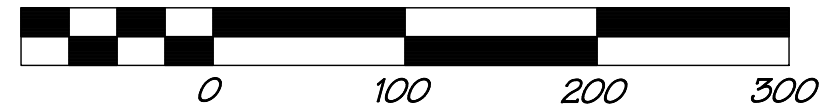
Section 27, T16N, R13W  
 Caddo Parish, Louisiana

I hereby certify that this Subdivision Plat is in compliance with Ordinance No. 115 of 1970 and amendments thereto.

Michael P. Bowman, P.L.S.  
 Louisiana Reg. No. 4693

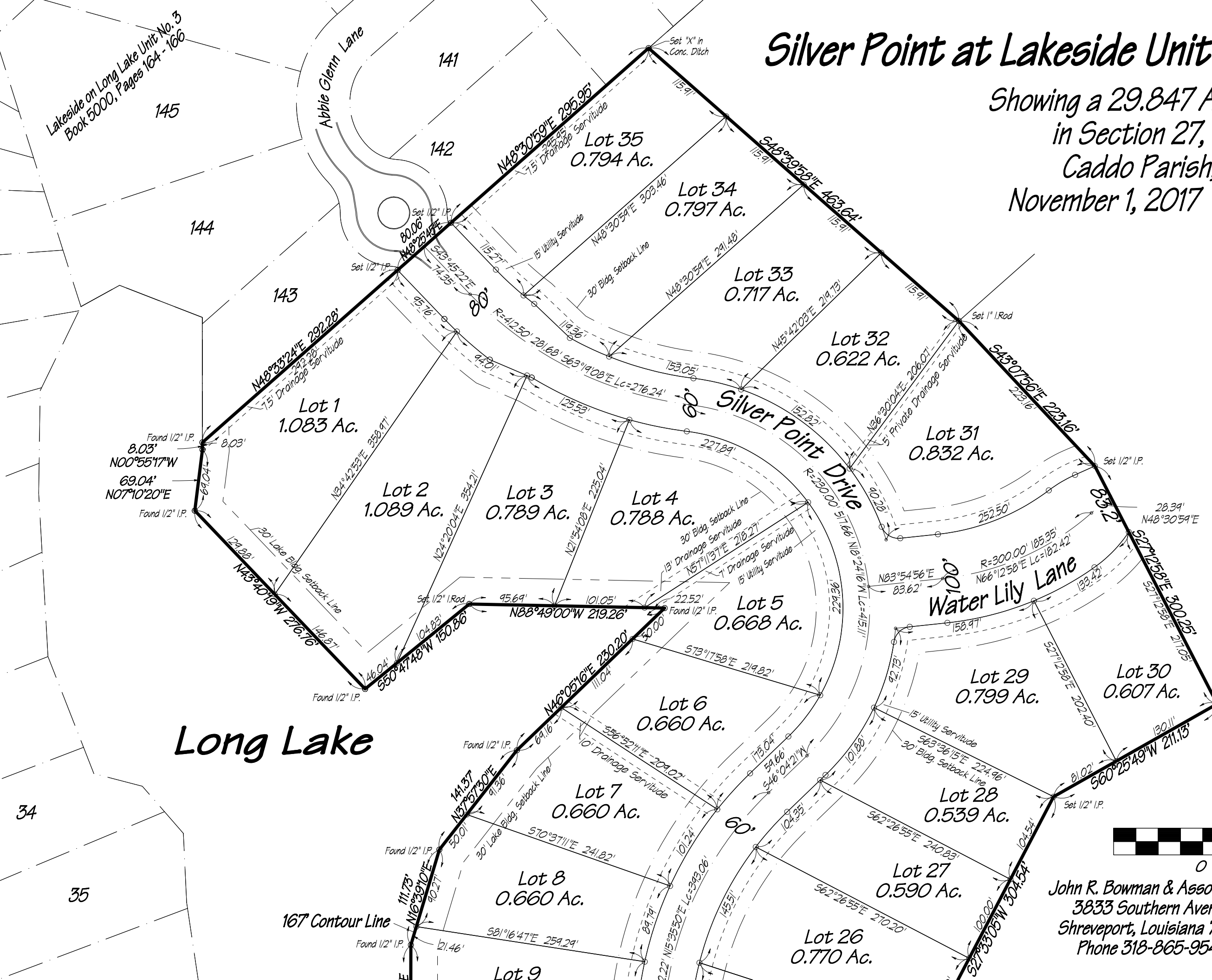
Date: \_\_\_\_\_

Graphic Scale: 1" = 100'



John R. Bowman & Assoc., Inc.  
 3833 Southern Avenue  
 Shreveport, Louisiana 71106  
 Phone 318-865-9540

Sheet 2 of 3



Lakeside on Long Lake Unit No. 3  
 Book 5000, Pages 164 - 166

34  
 35

Long Lake

144

143

141

142

Lot 35  
 0.794 Ac.

Lot 34  
 0.797 Ac.

Lot 33  
 0.717 Ac.

Lot 32  
 0.622 Ac.

Lot 31  
 0.832 Ac.

Lot 1  
 1.083 Ac.

Lot 2  
 1.089 Ac.

Lot 3  
 0.789 Ac.

Lot 4  
 0.788 Ac.

Lot 5  
 0.668 Ac.

Lot 6  
 0.660 Ac.

Lot 7  
 0.660 Ac.

Lot 8  
 0.660 Ac.

Lot 9

Lot 29  
 0.799 Ac.

Lot 30  
 0.607 Ac.

Lot 28  
 0.539 Ac.

Lot 27  
 0.590 Ac.

Lot 26  
 0.770 Ac.

167 Contour Line

Silver Point Drive

Water Lily Lane

Abbie Glenn Lane

Set 'X' in Conc. Ditch

Set 1" I.Rod

Set 1/2" I.P.

Set 1/2" I.P.

Set 1/2" I.P.

Set 1/2" I.P.

Set 1/2" I.P.

Found 1/2" I.P.

Found 1/2" I.P.

Found 1/2" I.P.

Found 1/2" I.P.

Found 1/2" I.P.

Found 1/2" I.P.

Found 1/2" I.P.

8.03'  
 N00°55'17"W  
 69.04'  
 N07°10'20"E

8.03'

69.04'

N00°55'17"W

N07°10'20"E

8.03'

69.04'

N00°55'17"W

N07°10'20"E

8.03'

69.04'

N00°55'17"W

N07°10'20"E

8.03'

69.04'

N00°55'17"W

N07°10'20"E

8.03'

69.04'

N00°55'17"W

N07°10'20"E

8.03'

69.04'

N00°55'17"W

N07°10'20"E

8.03'

69.04'

N00°55'17"W

N07°10'20"E

8.03'

69.04'

N00°55'17"W

N07°10'20"E

8.03'

69.04'

N00°55'17"W

N07°10'20"E

8.03'

69.04'

N00°55'17"W

N07°10'20"E

8.03'

69.04'

N00°55'17"W

N07°10'20"E

8.03'

69.04'

N00°55'17"W

N07°10'20"E

8.03'

69.04'

N00°55'17"W

N07°10'20"E

8.03'

69.04'

N00°55'17"W

N07°10'20"E

8.03'

69.04'

N00°55'17"W

N07°10'20"E

8.03'

69.04'

N00°55'17"W

N07°10'20"E

8.03'

69.04'

N00°55'17"W

N07°10'20"E

8.03'

69.04'

N00°55'17"W

N07°10'20"E

8.03'

69.04'

N00°55'17"W

N07°10'20"E

8.03'

69.04'

N00°55'17"W

N07°10'20"E

8.03'

69.04'

N00°55'17"W

N07°10'20"E

8.03'

69.04'

N00°55'17"W

N07°10'20"E

8.03'

69.04'

N00°55'17"W

N07°10'20"E

8.03'

69.04'

N00°55'17"W

N07°10'20"E

8.03'

69.04'

N00°55'17"W

N07°10'20"E

8.03'

69.04'

N00°55'17"W

N07°10'20"E

8.03'

69.04'

N00°55'17"W

N07°10'20"E

8.03'

69.04'

N00°55'17"W

N07°10'20"E

8.03'

69.04'

N00°55'17"W

N07°10'20"E

8.03'

69.04'

N00°55'17"W

N07°10'20"E

8.03'

69.04'

N00°55'17"W

N07°10'20"E

8.03'

69.04'

N00°55'17"W

N07°10'20"E

8.03'

69.04'

N00°55'17"W

N07°10'20"E

8.03'

69.04'

N00°55'17"W

N07°10'20"E

8.03'

69.04'

N00°55'17"W

N07°10'20"E

8.03'

69.04'

N00°55'17"W

N07°10'20"E

8.03'

69.04'

N00°55'17"W

N07°10'20"E

8.03'

69.04'

N00°55'17"W

N07°10'20"E

8.03'

69.04'

N00°55'17"W

N07°10'20"E

8.03'

69.04'

N00°55'17"W

N07°10'20"E

8.03'

69.04'

N00°55'17"W

N07°10'20"E

8.03'

69.04'

N00°55'17"W

N07°10'20"E

8.03'

69.04'

N00°55'17"W

N07°10'20"E

8.03'

69.04'

N00°55'17"W

N07°10'20"E

8.03'

69.04'

N00°55'17"W

N07°10'20"E

8.03'

69.04'

N00°55'17"W

N07°10'20"E

8.03'

69.04'

N00°55'17"W

N07°10'20"E

8.03'

69.04'

N00°55'17"W

N07°10'20"E

8.03'

69.04'

N00°55'17"W

N07°10'20"E

8.03'

69.04'

N00°55'17"W

N07°10'20"E

8.03'

69.04'

N00°55'17"W

N07°10'20"E

8.03'

69.04'

N00°55'17"W

N07°10'20"E

8.03'

69.04'

N00°55'17"W

N07°10'20"E

8.03'

69.04'